

Plant extracts with anti-cancer activity

Development status:

- Pre-Clinical

Contact:

Assaf E. Sagiv, MBA

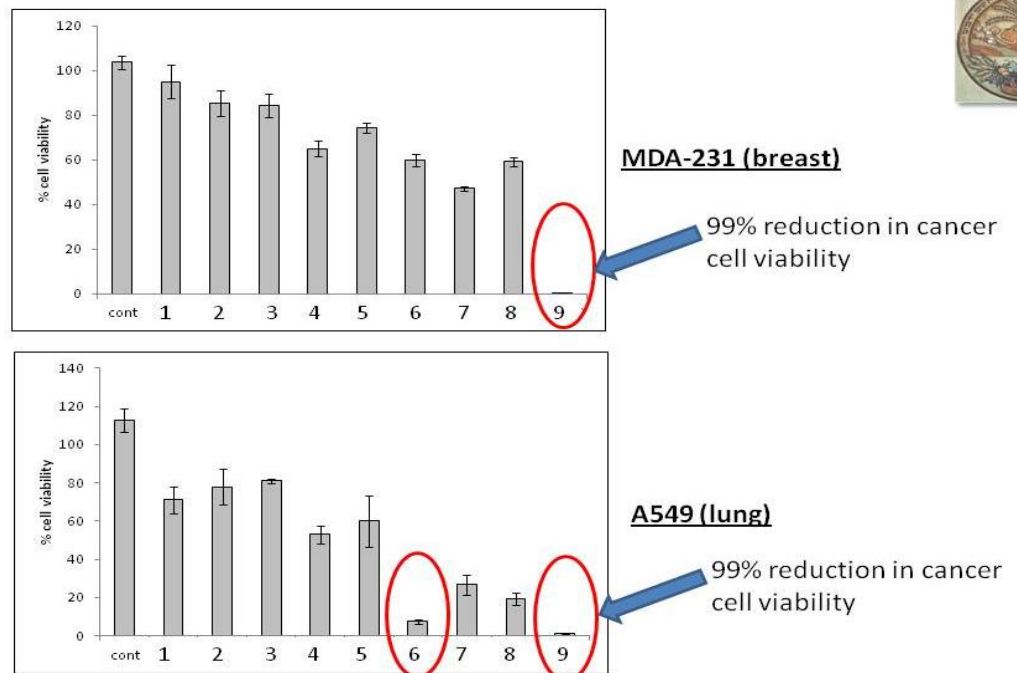
Bus. Dev. & Agreements Assaf@volcani.agri.gov.il

Innovation & Advantages :

In cancer cell lines - they inhibit cell proliferation

- Fractions of the plant extract show significant inhibitory effect on cell growth of cancer cell lines including breast, prostate, and lung (Figure 1).
- Active fraction was purified and analyzed by LCMS, resulting with identification of the active compounds.

Figure 1: The effect of treatment with fractions of the plant extract on cancer cell proliferation (breast cancer MDA-MB-231 and lung cancer A549)



TTM No. 105